

SUNSEY
ceramica ●●●



REINVENTING
THE FINNESE

DOUBLE CHARGE
VITRIFIED TILE

TECHNO LIGHT
**DOUBLE
CHARGE**
VITRIFIED TILE



600x600mm

Double charge vitrified tiles are popular amongst the masses due to their durability and strength. They are harder, denser and less porous than normal ceramic tiles. Even and symmetrical surface derived on these tiles, helps to spread the beauty of artistic designs. Besides, their polish too is equivalent to that of a marble which makes them a direct substitute of marble tiles, having altogether more strength and higher wear and tear resistance. Hence, these tiles are ideal for both indoor as well as outdoor applications for domestic, commercial and also for heavy traffic area.



Zero
Maintenance



Eco
Friendly



100%
Replacement
for Italian Marble



Low Water
Absorption



Ultra Polished
Nano Technology



Divine
Glossiness



ARIZONA

series

The go-to ceramic artistry for those looking to get something "special" outside of the expected contemporary styles.



DIOR

series

Formulated to create expressive surroundings that truly reflects your personality.

TROPIZ

series

Combining new ideas with standard designs to create intimate & sophisticated spaces.





TECHNO LIGHT
**DOUBLE
CHARGE**
VITRIFIED TILE



Arizona White

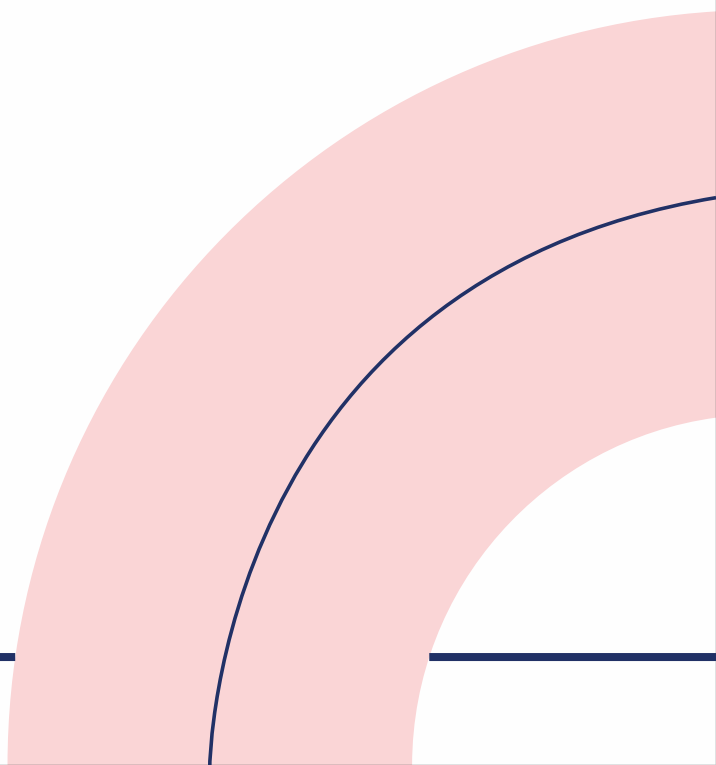


Arizona Caramel



Arizona Flamingo

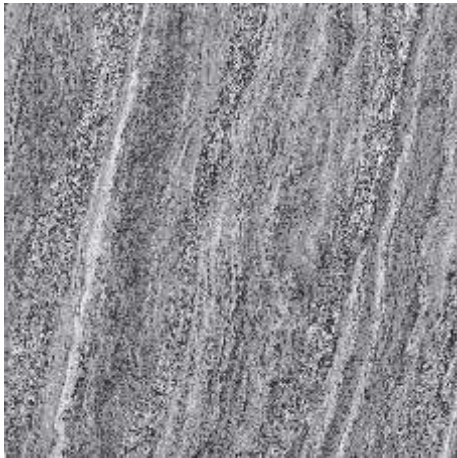
 The final version
of modern
decors





ARIZONA
series

SUNSEY
ceramica



Arizona Carbone



Arizona Panther



Arizona Thunder



Arizona Tiger



Arizona Scarlet



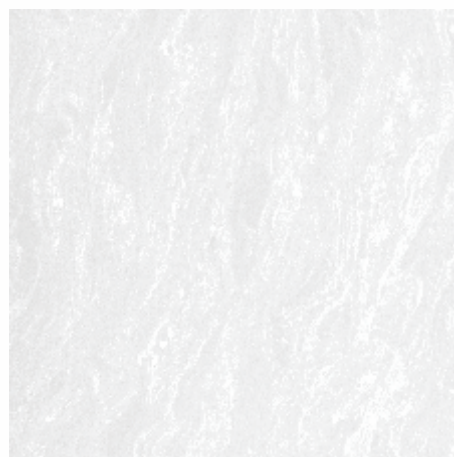
Arizona Dusk







TECHNO LIGHT
**DOUBLE
CHARGE**
VITRIFIED TILE




Dior White

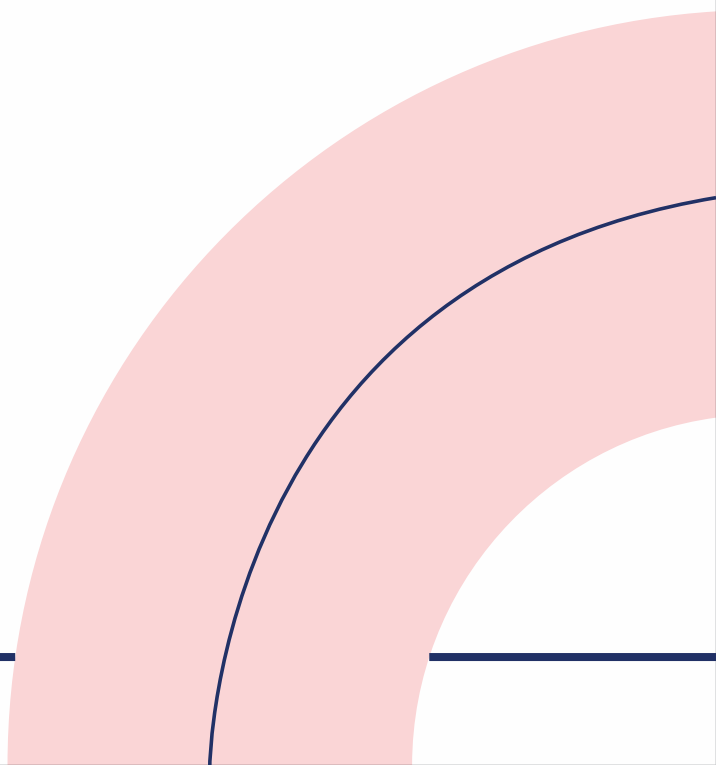


Dior Caramel



Dior Flamingo

 Your time to
feel more
nature driven







Dior Carbon



Dior Tiger



Dior Scarlet



Dior Phantom



Dior Black Peral

Roundup
the most
salutary
designs





TECHNO LIGHT
**DOUBLE
CHARGE**
VITRIFIED TILE



Crystal White



Tropiz Beige



Tropiz Crema



Tropiz Pink



Tropiz Pista





TROPIZ
series

SUNSEY
ceramica



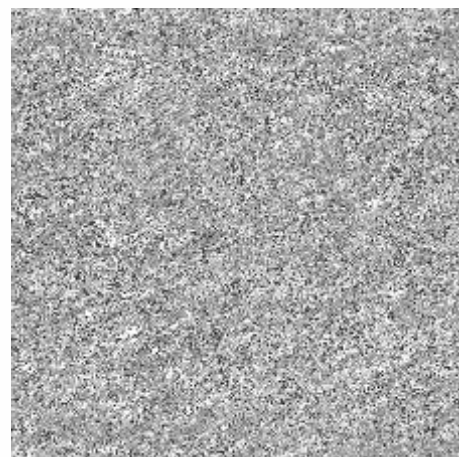
Tropiz Almond



Tropiz Ruby Red



Tropiz Granite



Tropiz Slate



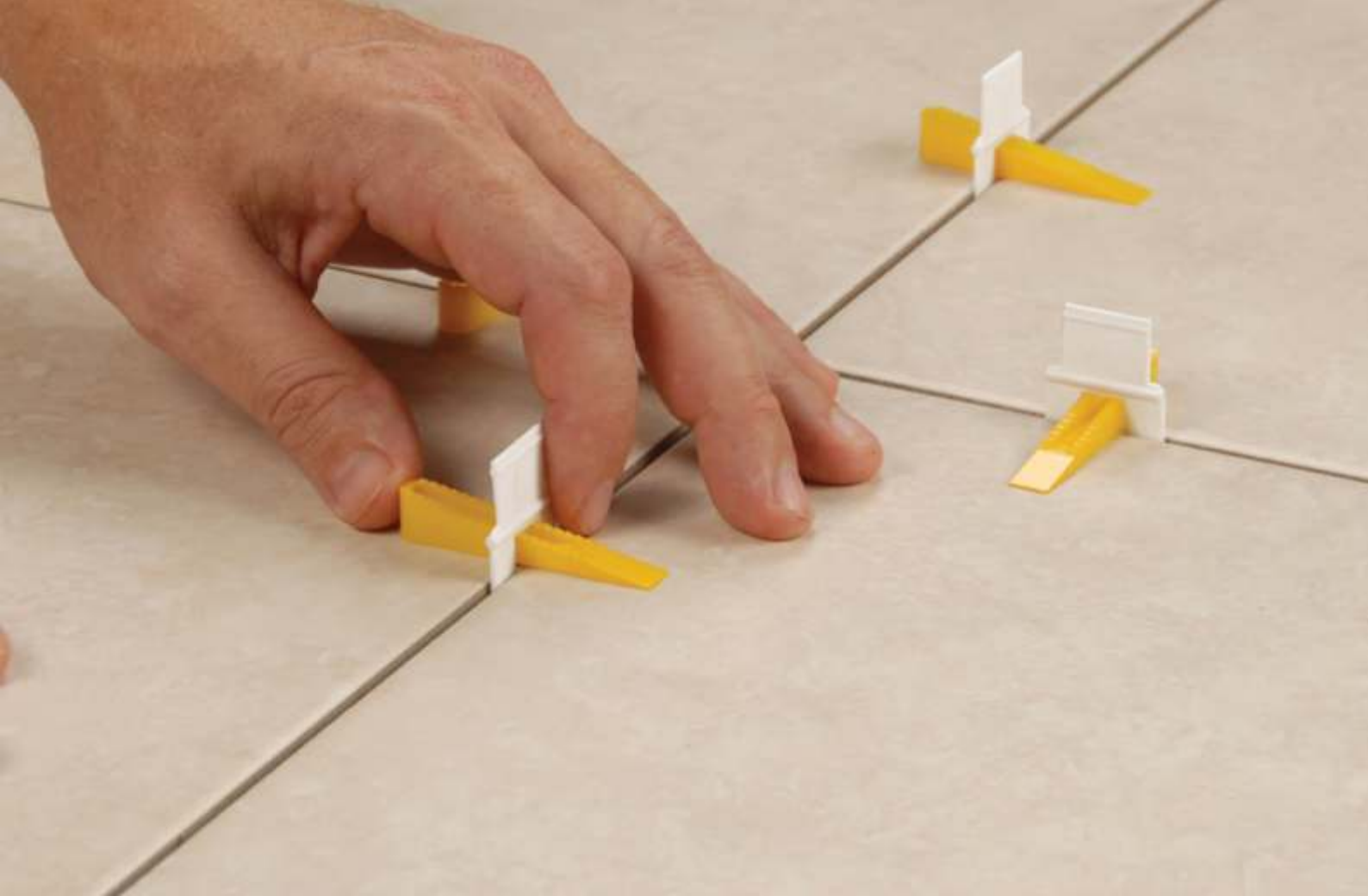
Tropiz Black



Royal Black







LAYING INSTRUCTION

- Prepare base mortar with cement and sand in the ratio 1:4.
- Set the levels for floor (i.e. dead level or slope as specified by the Architect / Contractor).
- Prepare cement slurry i.e. mixture of cement and water to form a thick paste and spread it on the leveled base mortar.
- Wet the back side of the tile with water. Complete immersion of water is not required.
- If tiles are square or rectangular in shape, set the right angles for the area and place the first tile along the right angle lines and place it on base mortar. Tap gently only with a rubber or wooden mallet to obtain perfect levels.
- Clean the surface of the tile with clean water immediately after laying with wet sponge, Ensure the base mortar cement which squeezes through the joints does not settle on the tile. Also ensure that the water used is not hard to brackish.
- Do not use the area laid for at least 24 hours.
- Fill in the joints with pointing material which is a mixture of white cement and desired color pigment. For higher quality of finishes, You could use, if required, a polymer based cementitious tilling joint filler like Roffe rainbow. To get the desired color/shade, mix the same with water to form a smooth paste which should be applied to the joints, preferably with the use of rubber squeeze or rubber sheet. Do not apply the pointing material all over the surface.
- Allow pointing material to set for 15 minutes and then clean the surface of the tile with a clean wet sponge, removing the excess pigment on the tile surface.
- Wash the surface with soap water or mild detergent to obtain a clean surface and wipe it

TECHNICAL SPECIFICATION

SR. NO.	CHARACTERISTIC	STANDARD AS PER ISO-13006/EN14411 GROUP BIa	PERTH CERAMIC VALUE	TEST METHOD
A.	REGULATORY PROPERTIESZ			
1.	DEVIATION IN LENGTH & WIDTH	± 0.5%	± 0.1%	ISO-10545-2
2.	DEVIATION IN THICKNESS	± 5.0%	± 2.0%	ISO-10545-2
3.	STRAIGHTNESS OF SIDES	± 0.5%	± 0.1%	ISO-10545-2
4.	RECTANGULARITY	± 0.5%	± 0.1%	ISO-10545-2
5.	SURFACE FLATNESS	± 0.5%	± 0.1%	ISO-10545-2
6.	COLOR DIFFERENSS	UNALTERED	NO CHANGE	ISO-10545-16
7.	GLOSSINESS	AS PER MANUFACTURER	MIN. 90%	GLOSSMETTER
B.	STRUCTURAL PROPERTIES			
1.	WATER ABSORPTION	< 0.05%	< 0.05%	ISO-10545-3
2.	APPARENT DENSITY	> 2.0 gm/cc	> 2.28 gm/cc	DIN 51082
C.	MASSIVE MECHANICAL PROPERTIES			
1.	FLEXURAL MODULUS OF RUPTURE	MIN 35N/mm ²	MIN 40N/mm ²	ISO-10545-4
2.	FLEXURAL BREAKING STRENGTH	min 1300 n	MIN 2000 N	ISO-10545-4
3.	IMPACT RESISTANCE	AS PER MANUFACTURER	MIN 0.55	ISO-10545-5
D.	SURFACE MECHANICAL PROPERTIES			
1.	DEEP ABRASION RESISTANCE	MAX 175mm ³	MAX 132mm ³	ISO-10545-5
2.	MOH'S HARDNESS	MIN 6	8*	En101
E.	THERMO HYGROMETRIC PROPERTIES			
1.	FROST RESISTANCE	NO DAMAGE	FORST PROOF	ISO-10545-12
2.	THERMAL SHOCK RESISTANCE	NO DAMAGE	NO DAMAGE	ISO-10545-9
3.	MOISTURE EXPANSION	NIL	NIL	ISO-10545-10
4.	THERMAL EXPANSION	MAX 9.0 x 10 ⁻⁶	MAX 6.5 x 10 ⁻⁶	ISO-10545-8
F.	THERMO HYGROMETRIC PROPERTIES			
1.	CHEMICAL RESISTANCE	NO DAMAGE	NO DAMAGE	ISO-10545-13
2.	STAIN RESISTANCE	RESISTANT	RESISTANT	ISO-10545-14
G.	THERMO HYGROMETRIC PROPERTIES			
1.	SLIP RESISTANCE (FRICTION CO)	> 0.40	> 0.40	ISO-10545-17

PACKING DETAILS

PRODUCT	SIZE	NO. OF TILES PER BOX	COVERAGE AREA
DOUBLE CHARGE VITRIFIED TILES	600x600mm	4 Pcs.	1.44sq.mtrs

Note: Color Shown are as accurate as the limitations of the printing process will allow. Prospective customers are advised to inspect a sample of the tile before ordering. Every effort has been made to ensure the accuracy of the information given. However, the company reserve the right to change the specifications without prior notice. Sometime variations in shade or size being inherent to ceramic industry may occur. Before fixing, we advise you to follow the fixing instructions on the cartons of the tiles as no responsibility can be accepted by the company once the tiles have been fixed.

SUNSEY
ceramica ●●●